



## Company Profile

---

# AMPERE POWER AND AUTOMATION TECHNOLOGIES PVT. LTD.,

*Ampere*





# Index

---

- Introduction
- Vision and Mission
- Infrastructure
- Products
- Credentials
- Financial Facts
- Organisation chart
- Tools and Machines
- Major Customer
- Photographs of End Products
- Contact Details



## INTRODUCTION

---

**Ampere Power & Automation Technologies (pvt) Ltd.** is a leading manufacturer of all types of electrical control and automation panels based in Bangalore. The company incorporated in 2002 as Ampere Electric Systems has grown in to a full fledged, highly focused, value added manufacturing solutions provider managed by highly experienced and acclaimed professionals in the Power industry. We have been recognized as one of the lead vendors of ABB, Areva, GE, and many more for outsourcing of engineering and manufacturing of various kinds of electric control and automation panels. We have been supplying panels to various electricity boards and power plants across India and overseas through above listed customers.



## Directors profile / Vision and Mission

---

Mr Anand H is an Electrical Engineer and has worked with ABB for 18 years as Assistant Vice president in various capacities of execution. Mr Ranganath Gowda is an Electrical Engineer and has worked with ABB for more than three years as Engineer Manufacturing

Our vision to be 'The Value creator' starts by being close to the customer. Working closely with our customers, understanding their business needs and local market conditions, we are committed to ensure their success through quality excellence in our products, service offerings and through innovative solutions. We believe that by ensuring our customers success we will, in turn, be able to create value for all our employees and the communities in which we operate.



## Infrastructure

---

- The Factory is located in Bangalore (Peenya Industrial Area) with a shop floor area of 15000 Sq ft and office space of 3000 Sq ft. We have a total employees strength of more than 100 which includes Engineers, Technicians and Administration staff

Under the group company we have **Adobe Metal Products** which is focused in sheet metal fabrication. A separately dedicated shop of 6000 sq ft area is equipped with Amada make latest CNC machines on servo technology (Turret punch (AC255NT) and Power Press (RG80)). The latest software AP 100 NT helps us to

simulate 3D view of the end product which helps the designing without producing the proto type

Customised ERP system (SEED) is in use which integrates Manufacturing, Planning, Procurement, Quality control and Stores activities

The Accounting is handled through Tally package version 9.2

The Engineering is supported with Autocad version 2006

AP110 NT for CNC Programme Development



# Products

---

## Products manufactured as per Customer's design

- Control and Relay panels for ABB, GE, Areva
  - Line, Transformer, Bus bar, Generator panels for voltage levels from 33 Kv to 400 Kv (various utilities), Synchronising brackets/trolleys for ABB, Areva, Substation Automation Systems of ABB
- Remote Terminal Units for ABB, Marshalling Kiosks, Metering Boxes
- Rural Load Management System for Areva

## Products of own design

- Three Phase Primary Injection Kit
- Metering Panels
- Control and Relay panels for LT applications
- Control panels for Special purpose Machine
- ACDB and DCDB panels
- Control Desks
- Motor Control Centre panels (MCC)
- Power Control Centre Panels (PCC)
- Mosaic Mimic Panels (SACO Design)



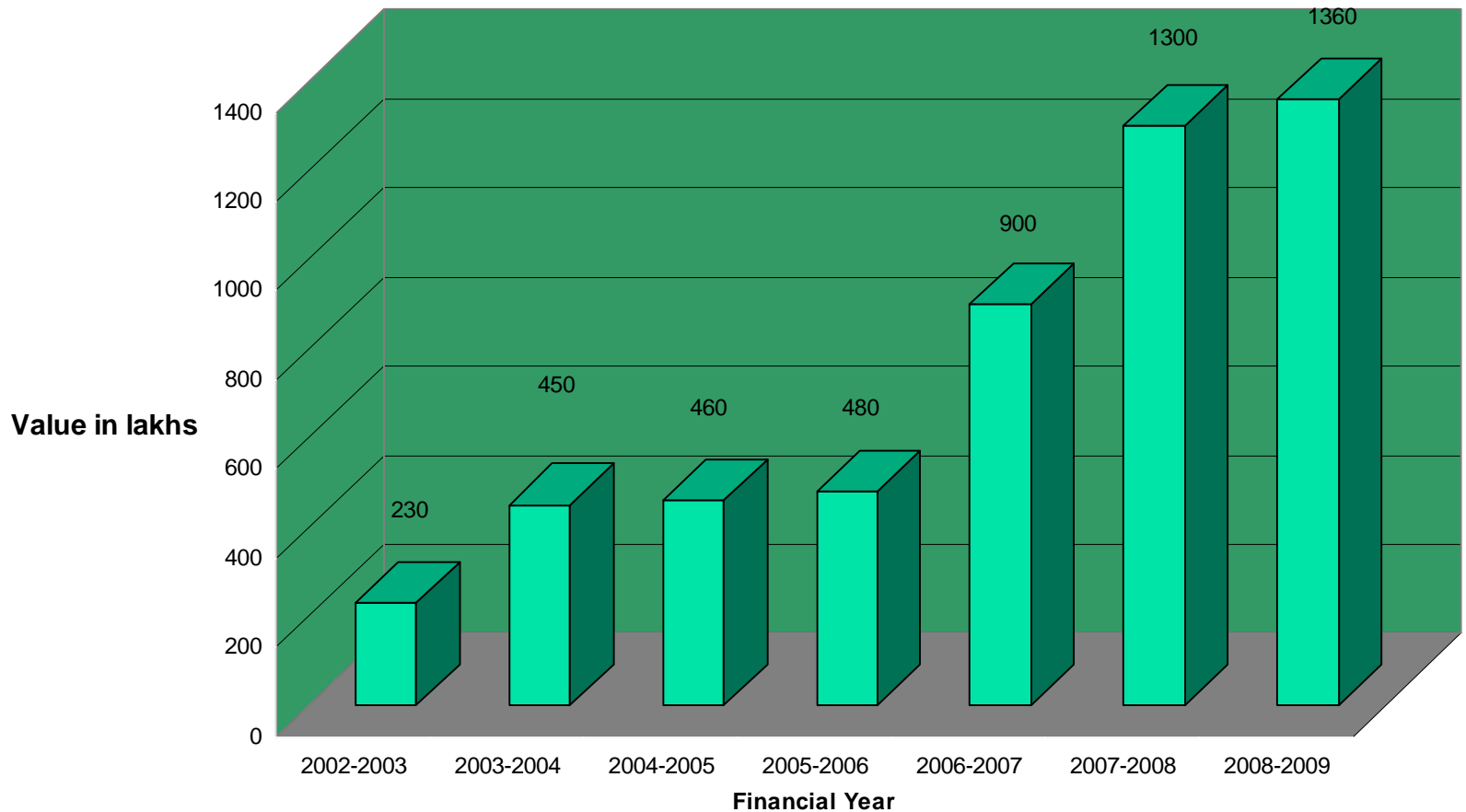
# Credentials

---

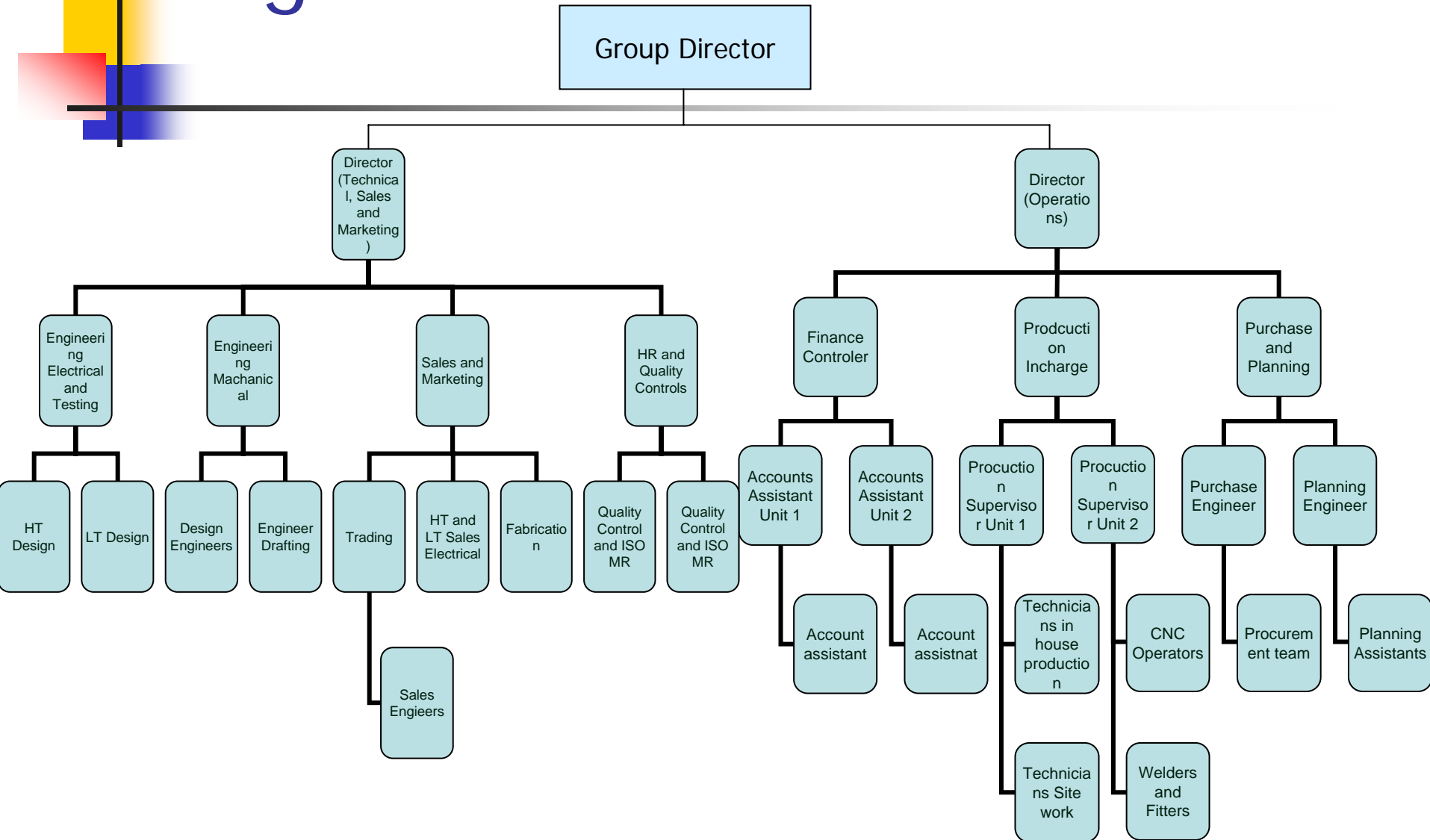
- Certified by NABCB (ICRS) for ISO 9001-2000  
Certificate no:1225-QMS-1214
- Approved Vendor of PGCIL (Power Grid Corporation of India Limited) for the supply of CT Marshalling Box, Control and Relay panels
- Approved Vendor of BHEL for the supply of LT panels
- Approved Vendor of ABB, Areva, GE, Easun Reyrolle,
  - Bill Forge, Fowler-westrup, Cethara-vessels,
  - John Bean Technologies corp (FMC Technologies USA)
- CPRI certification for IP54 protection of enclosures

# Financial Facts

## Business Performance



# Organisation Structure



# Capital IT equipments and Tools and Machinery

4.COMPUTERS AND SOFTWARE		
A.	PERSONAL COMPUTERS	REPUTED ---15nos
B.	PRINTER DOT MATRIX	EPSON LQ 1050+---1no
C.	PRINTER LASER JET	HP LASER JET--1no
D.	SCANNER CUM COPIER	HP SCAN JET 2400--1no
E.	FAX MACHINE	PANASONIC--1no
F.	UPS WITH INVERTOR 2KVA	APC UPS--1no
G.	5 KVA UPS SYSTEM	APC--1NO
H.	16 PORT SWITCH FOR LAN	D LINK--1NO
I	DATA SERVER	INTEL--1NO
J	ERP Software SEED	10 Users license

A.	JIGSAW MACHINE	BOSCH --- 2nos
B.	TABLE DRILLING MACHINE	REPUTED----1nos
C.	PORTABLE TAPPING MACHINE	BOSCH -----3nos
D.	FERRULE PRINTING MACHINE	LETATWIN----3nos
E.	TROLLEY-1 M	DILIP-----2nos
F.	PORTABLE DRILLING MACHINE	BOSCH-----3nos
G.	TROLLEY-1.8M	DILIP-----1no
H.	CUT OFF SAW MACHINE	DEWALT---1no



# Machines at Adobe Metal Prd's

---

## **TOOLS**

### **ITEM DESCRIPTION**

INTELLIGENT CNC TURRET PUNCHING MACHINE MODEL AC255NT

NC BENDING MACHINE MODEL RG 80

MIG WELDING MACHINE ENDURA 250

STUD WELDING MACHINE MODEL CD 1000

DRILLING MACHINE FLOOR MOUNTED 25 MM CAPACITY

TAPPING MACHINE 12MM CAPACITY

PISTOL DRILLING MACHINE MODEL: GBM 13-2

ANGLE GRINDING MACHINE MODEL GWS 6-100

SANDERING MACHINE 7 INCH

CUT OFF MACHINE 14 INCH MODEL GCO 2000

IMPACT DRILLING MACHINE 13 MM MODEL GSB 13-RE

BENCH VISES, C CLAMPS, WELDING SHIELDS,ETC

## **TESTING AND MEASURING MACHINES**

VERNIER CALIPER 0-300MM

MICROMETER 0-25MM

PAINT THICKNESS GAUGE

STEEL SCALES, MEASURING TAPES, SPIRIT LEVEL, TRY SQUARE



# Testing and Measuring instruments

A.	MULTI FUNCTION METER 1A, 600V	RISHABH
B.	MILLI AMPS SOURCE 20mA, 20V	SHRIJI ELECTRONICS
C.	MEGGER 1000V	SHANTHI
D.	DC SOURCE 3A, 300VDC	UNIVERSAL INSTRUMENTS
E.	HV TESTER 0-5kV	AUTOMATIC ELECTRIC
F.	MULTI METER 10A,600V,	RISHABH
G.	THREE PHASE TEST KIT 5A, 270VAC	AMPERES
H.	THREE PHASE DIMMERSTAT 440V	AUTOMATIC ELECTRIC
I.	THREE PHASE TRANSFORMER 440V, 120 DEGREE LEAD AND LAG	AUTOMATIC ELECTRIC
J.	SINGLE PHASE VARIAC 0-270VAC	AMPERES
K.	VERNIER CALIPER	ASAHI
L.	SCREW GAUGE	REPUTED
M.	HV TESTER 0-30KV	AUTOMATIC ELECTRIC

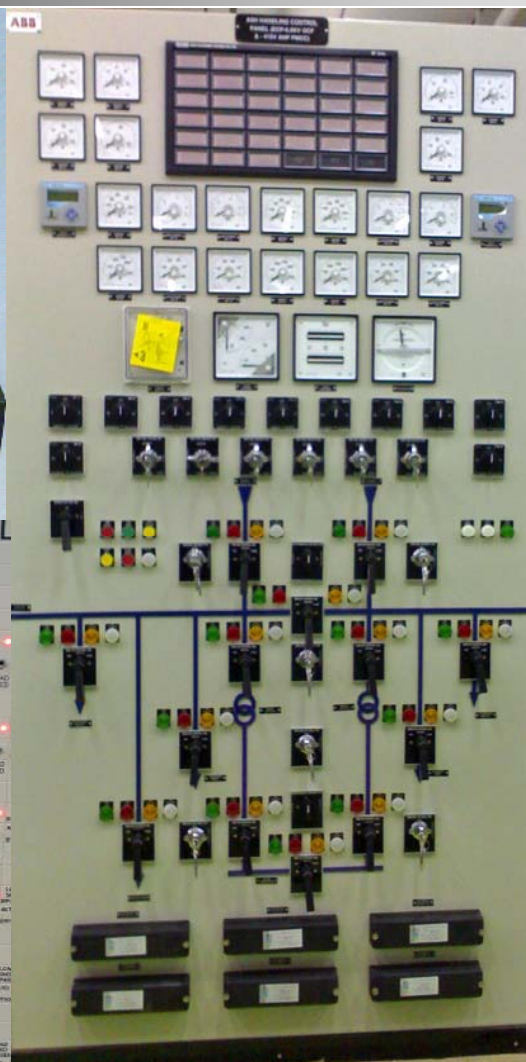
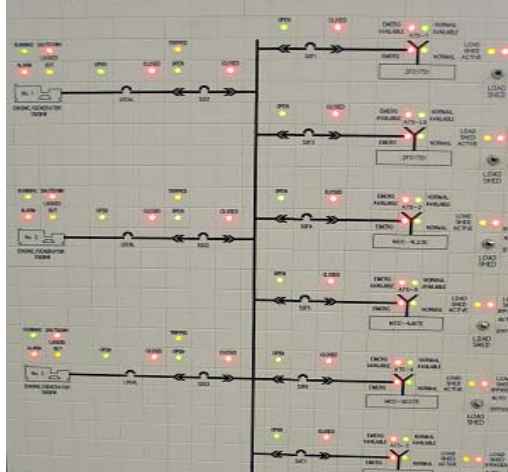
# Customers



# Products



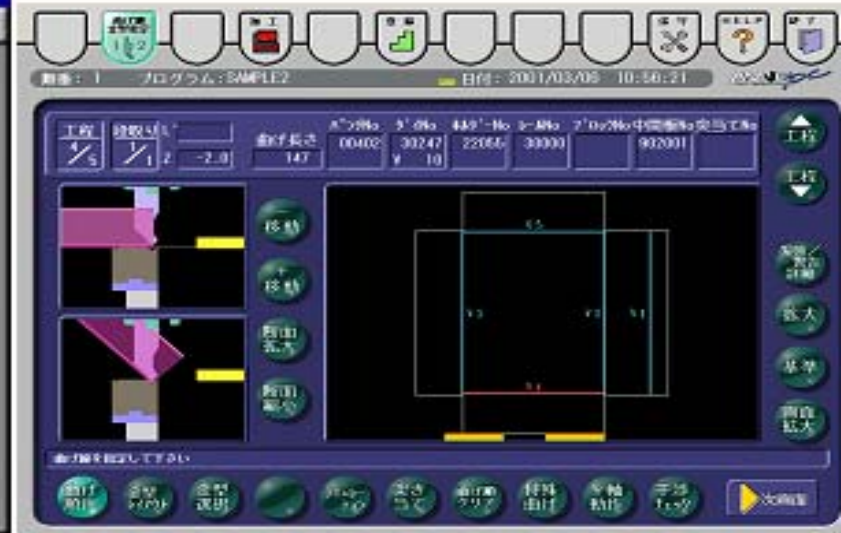
MIAMI INTERNATIONAL AIRPORT SOUTH TERMINAL



LT Panels



# Machines at Adobe Metal Products



# Products of Trading

Wiedmuller



CP SNT 120 W 24 V 5 A



GWT

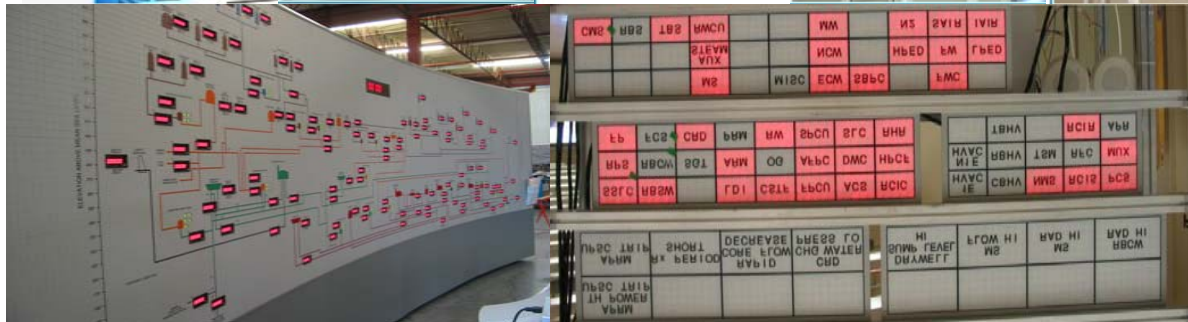


Portwell  
Laxsons



pfannenberg

SACO Controls





# Commercial Details

---

**Ampere Power & Automation Technologies Private Ltd.**

#43, Byraveshwara Industrial Estate,

Hegganahalli, off An Byraveshwara drahalli Main Road, Peenya II Stage,

Bangalore-560091, India

Tel: +91-80-28367088, Fax: +91-8028365103

email: [anand.h@amperetechnologies.com](mailto:anand.h@amperetechnologies.com) *Anand.H -Director: 9901491099*

Corporate Identity Number: U32209KA2006PTC040456

PAN: AAFCA9295D

ECC: AAFCA9295DXM001

Service Tax: AAFCA9295DST001

Sales Tax (VAT): 29410725007

Bank: Canara Bank, Peenya Branch, Bangalore-560058

Account No: CA-1991